



**Hochschule Anhalt**  
Anhalt University of Applied Sciences

# Welcoming Address 20th International Conference on Information Technologies in Landscape Architecture

Prof. Dr. Elena Kashtanova  
Dean

Department of Agriculture, Ecotrophology  
and Landscape Development



# Locations

HSA



## Bernburg

- Business studies
- Environmental orientated programmes of study

## Dessau

- creative branches of study (architecture and design)
- along the lines of the Bauhaus tradition

## Köthen

- Engineering and computer sciences
- Since 1891 education in engineering

# Campus Strenzfeld in Bernburg

HSA



# Life Sciences

HSA



**Agriculture and  
Agribusiness  
900**



**Nature Conservation  
300**



Gute Experimentelle  
Praxis

4

**Landscape Architecture  
and Environmental  
Planning  
250**



**Nutrition Science  
500**



# Landscape Architecture - Campus Strenzfeld

HSA



HSA



HSA



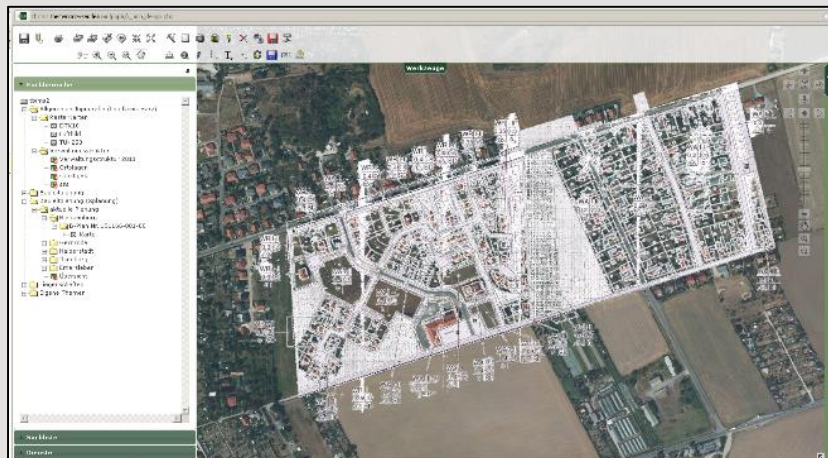
HSA



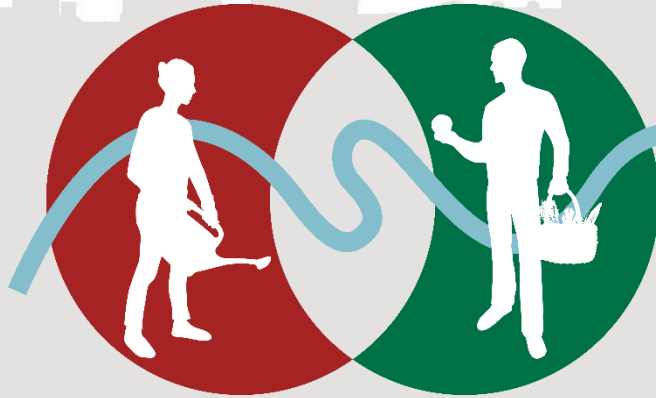
# Research Group Geoinformatics and Remote Sensing

HSA

- GIS and Remote Sensing in Environmental and Urban Planning
- Change detection
- Monitoring
- Standardization in Planning
- Development of Geo-Webapplications/E-Government- Applications
- Smart City / Smart Region Applications
- GIS in Participation



HSA



## stadt PARTHE land

Kulturlandschaftsmanagement als Brücke  
zwischen Metropole und ländlichem Raum

Management of cultural  
landscapes – mitigation  
measures on farmland

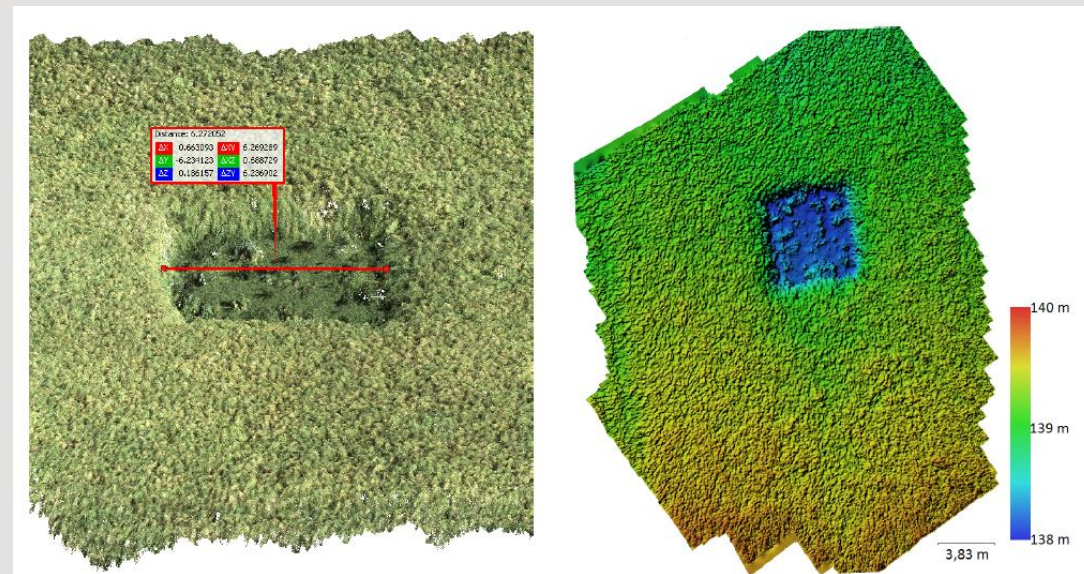
# Habitats

HSA

- Detection and localisation of ground breeders (e.g. skylark)
- Implementation and maintenance
- Habitat quality



Skylark plots



Digital surface modell of skylark plots

# Using Social Media and Web GIS Application for Geodesign Purpose

CityPlanner for Bernburg: integrated with visualization, information and social networking

HSA



Kim, D. Pietsch, M., Lutz, R. (2015): Using Social Media and Web GIS Application for Geodesign Purposes – A Case Study in the City of Bernburg, Germany, in: Buhmann/Ervin/Pietsch (Eds.): Digital Landscape Architecture 2015, Herbert Wichmann Verlag, VDE VERLAG GMBH, Berlin/Offenbach, S. 307-314

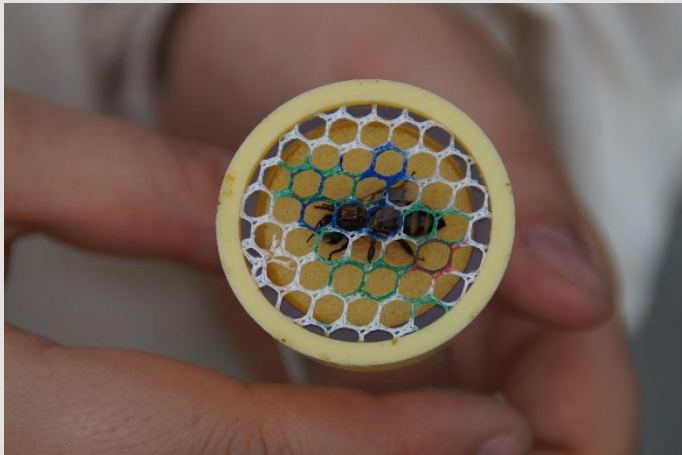
# Product- and Technology Development

HSA



# Transparency for the Consumers

HSA



# Field Research: Global Warming/Dry Resistance

Mobile Soil Humidity measurement Diviner 2000® (Sentek Sensor Technologies)

HSA



- Frequenz Domain Reflektometry (FDR)



HSA



# Central German Lignite Mining District

HSA



Tischew 2004, Tischew & Kirmer 2007,  
Kirmer et al. 2013, Landeck et al. 2017

- In the early 90ies most mines in eastern Germany were closed
- In the Central German lignite mining district, c. 6 million t lignite was mined and c. 15 km<sup>3</sup> overburden was moved on 512 km<sup>2</sup>
- Until the early 90ies, almost 50 % of the surface-mined land developed via spontaneous succession due to economical reasons
- Comprehensive studies on spontaneous succession and assisted site recovery since 1994

## Potentials on landscape level result in ...

HSA



... structure- and species-rich biotope mosaics after 1-2 decades



## Greening with standard seed mixtures



## Greening with native species of local origin



# Regional Development

HSA



SACHSEN-ANHALT



EUROPÄISCHE UNION

**ELER**

Europäischer Landwirtschaftsfonds für  
die Entwicklung des ländlichen Raums

**HIER INVESTIERT EUROPA  
IN DIE ZUKUNFT UNSERES LANDES.**

[www.europa.sachsen-anhalt.de](http://www.europa.sachsen-anhalt.de)



LOKALE AKTIONSGRUPPE  
**UNTERES SAALETAL  
UND PETERSBERG**

# Public Relations

HSA





**Hochschule Anhalt**  
Anhalt University of Applied Sciences



**Welcome to the Anhalt University  
and Green Department!**

[www.hs-anhalt.de](http://www.hs-anhalt.de)

